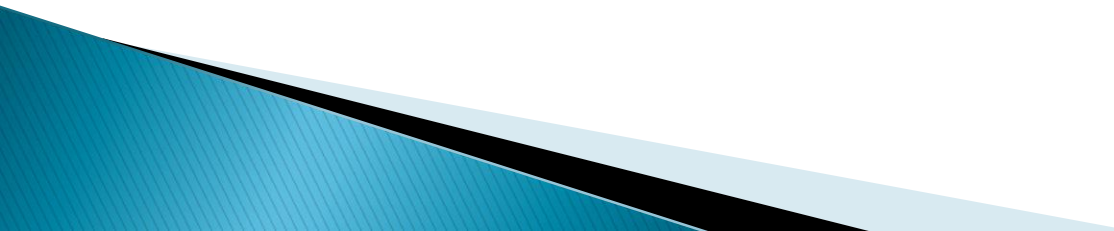


CLB: Pupil Guidance Centre

Stefanie Maras
VCLB De Wissel – Antwerp

- ▶ WHAT do we do ?
- ▶ Working principles.
- ▶ For WHO?
- ▶ CLB-team.

- ▶ Every school has guidance from a CLB.
 - ▶ Our centre works with 153 schools in the city of Antwerp and district.
 - ▶ More dan 50000 pupils.
 - ▶ 170 active employees.
 - ▶ Normal schools + special schools
- 

What ?

Guidance to insure the potential development of pupils.

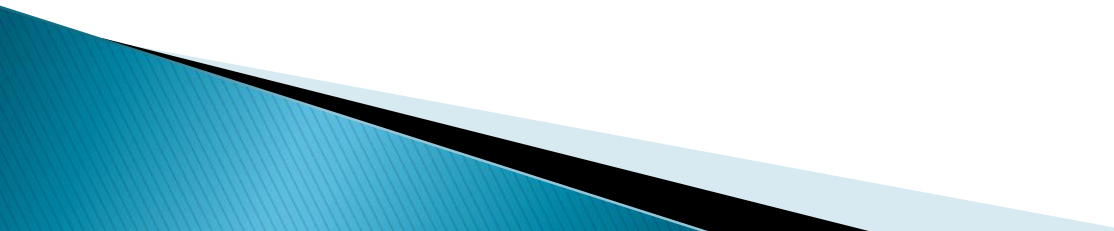
-> provide care for children on every area of development: physical, Cognitive, Dynamic, Emotional.

What ?

Goal ?

Prevention and remediation so that there is less need for external curative work or therapy

What ?

- Support schools / teachers
 - Coaching of school-teams
 - Individual diagnostic work
 - Individual guidance
- 

4 key pillars

Learning and studying

school career

preventive health care

social and emotional
development

Learning and studying



School career



All children
Can Learn!

Social and emotional development

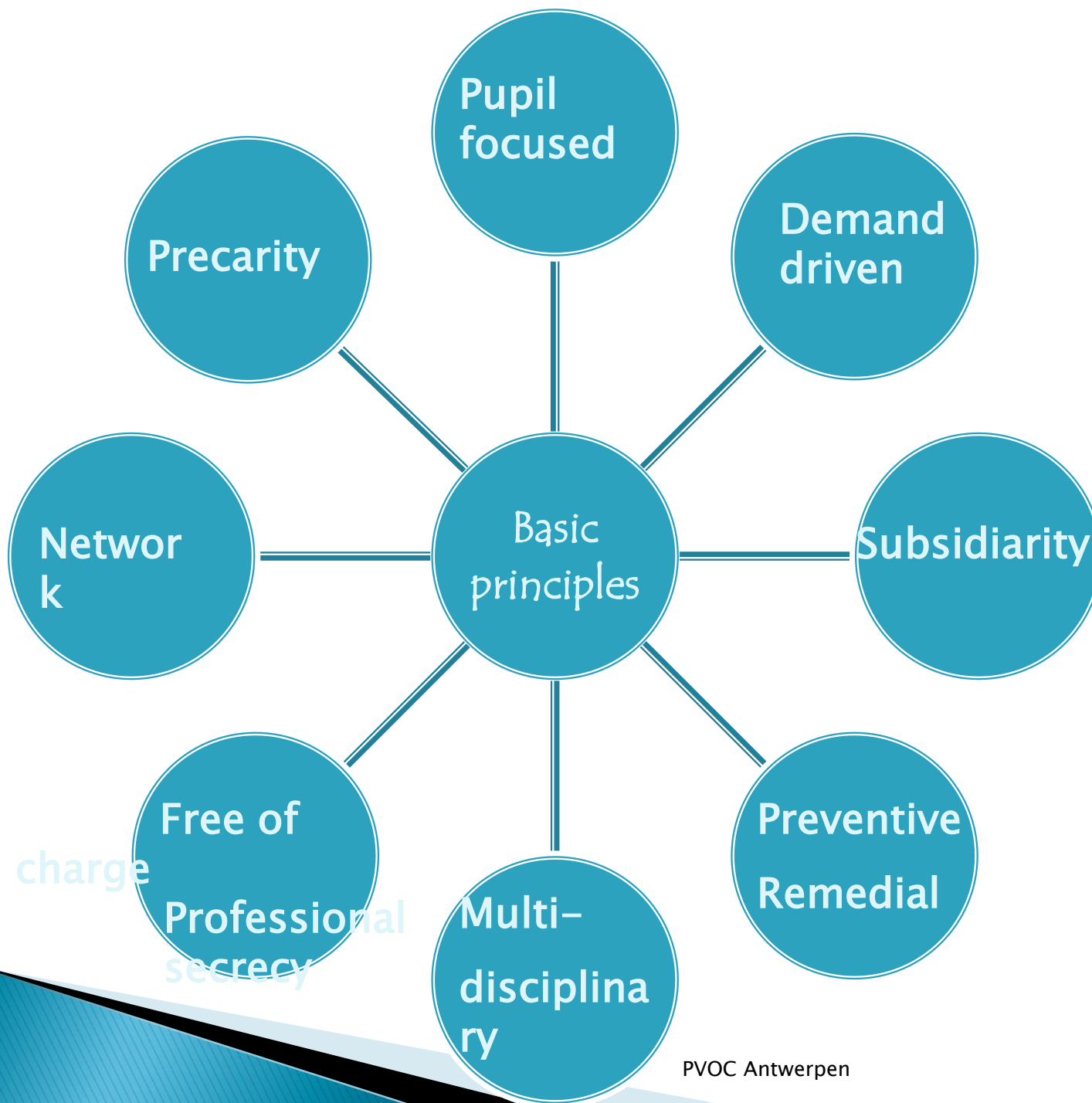


Preventive health care



Guidance

- ▶ ... on demand
- ▶ And mandatory.
 - Medical consult
 - You have to go to school. (leerplicht)
- ▶ For free

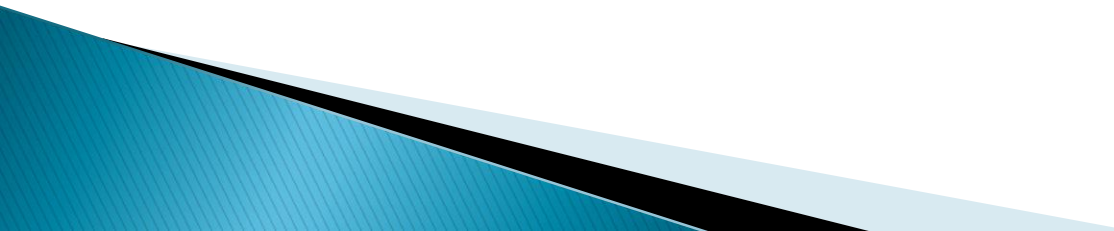


For Who ?

- ▶ Pupils / students
- ▶ Parents
- ▶ School

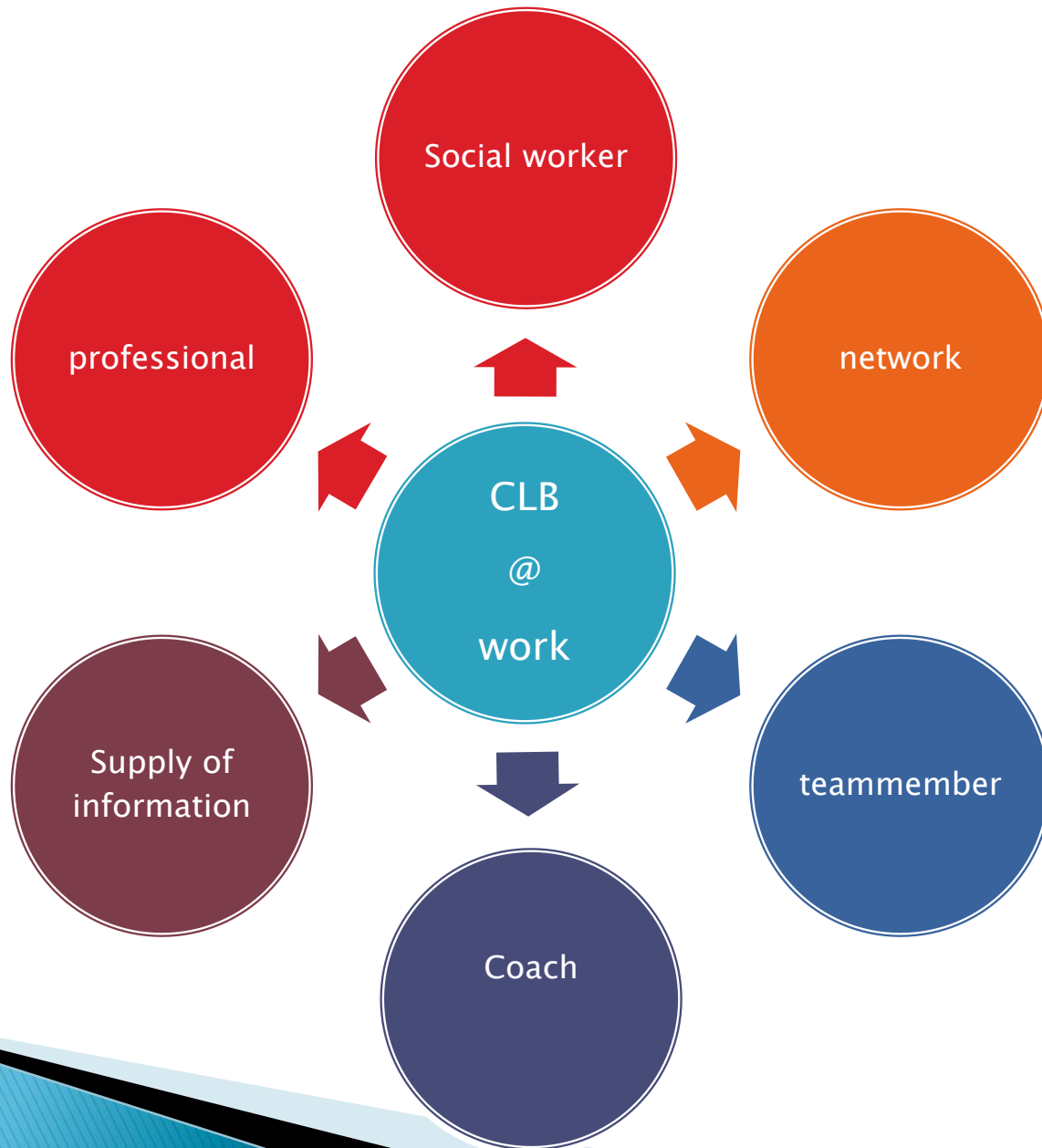
- ▶ We all have to work together to make it better for the pupil.
- ▶ Parents (<12 years) have to give consent.
- ▶ Pupils (>12 years) have to give consent.

CLB and school

- ▶ Complementary
 - ▶ ...with a multidisciplinary team
 - ▶ Mutual consideration and with contracts,
 - ▶ But always independant,
 - ▶ And in the pupils /students best interest,
- 

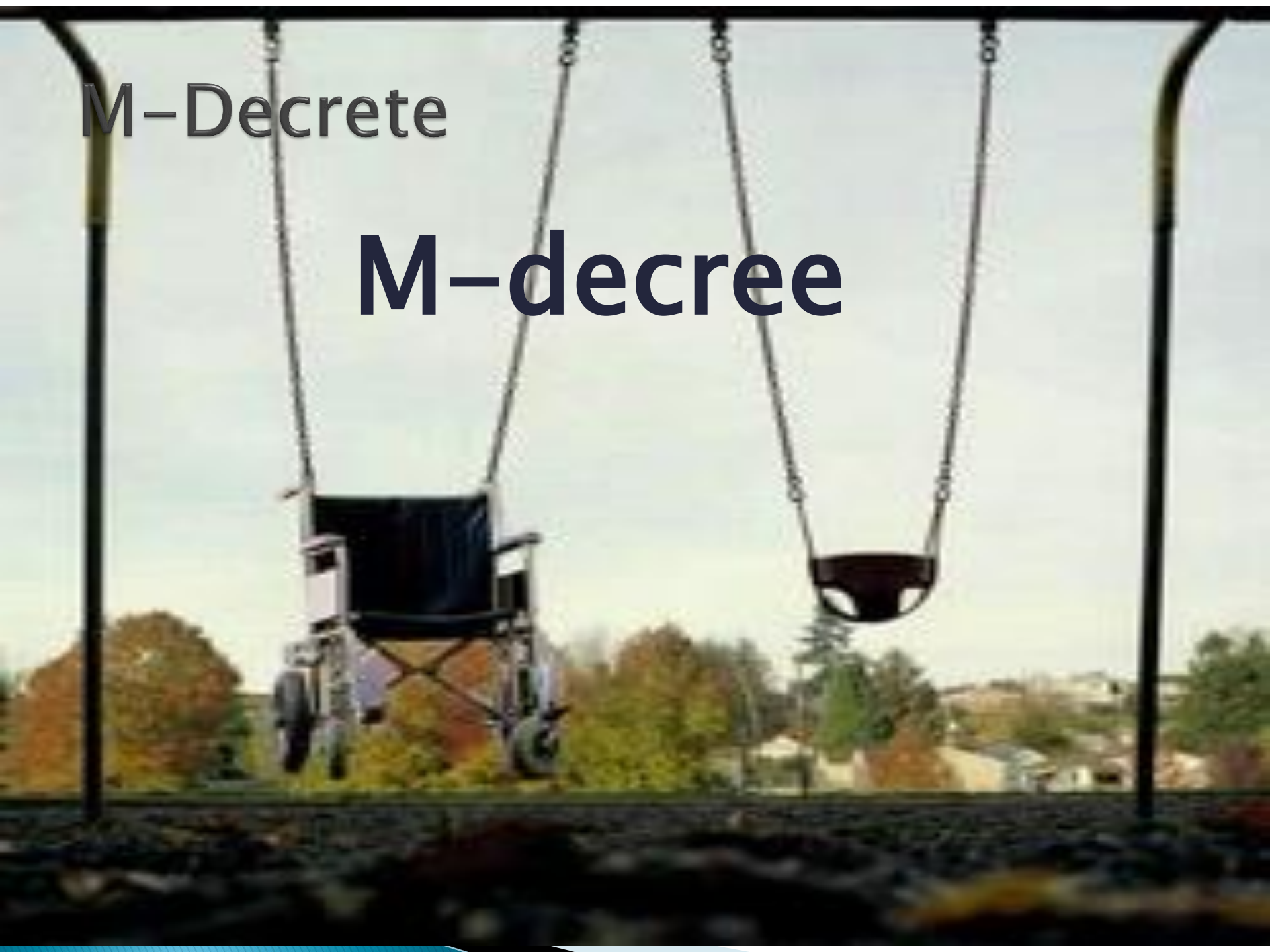
Working at a CLB

- ▶ Different disciplines
 - School psychologists
 - Social workers
 - Doctors
 - Nurses.
 - Intercultural mediator (Arabic and Türkisch)
- ▶ Different roles



M-Decrete

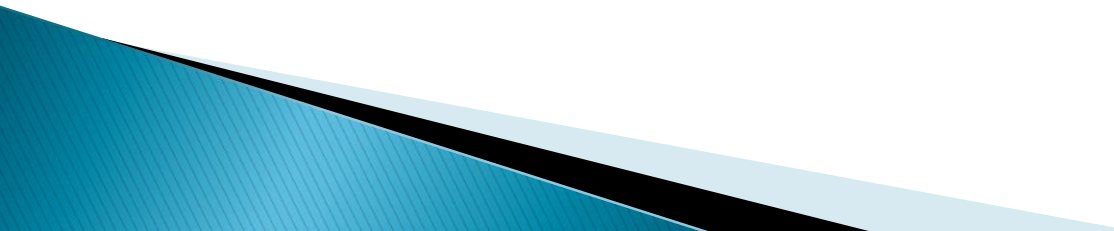
M-decree



M-decree

- ▶ VN-agreement
- ▶ Right to inclusion
- ▶ Students with a disability have the right to choose for “normal” schools.
 - Disability: cognitive, behavior, physical, ASS

Impact on CLB

- ▶ Attitude CLB towards inclusion.
Respect for the choice that parents make.
 - ▶ Care continuum
 - ▶ Special education
- 

FASE 0: GOOD PREVENTIVE BASIC CARE

FASE 1: RAISED CARE

FASE 2: EXTENSION OF CARE

**FASE 3: PASSAGE TO
TAILORED CARE**

Special education



Questions?

